

# **KZN PHC ENGINEERING BASED ON COPHC**

**NS RADEBE**

**PROVINCIAL PHC MANAGER**

**17 FEBRUARY 2015**



**health**

Department:  
Health

**PROVINCE OF KWAZULU-NATAL**

# Community Oriented Primary Care

- **Community Orientated Primary Care** : Dr Sydney Kark COPC is ‘a unique marriage of public health and clinical care’. It is a personal, family and community practice. It is a strategy that addresses health problems in a defined community (population and geographical area). The practice is not only in and for the community but with the community according to identified needs. It requires inter-professional, inter-sectoral (e.g. water, sanitation and social services) and team practice. It involves monitoring and evaluation of the interventions introduced as well as research

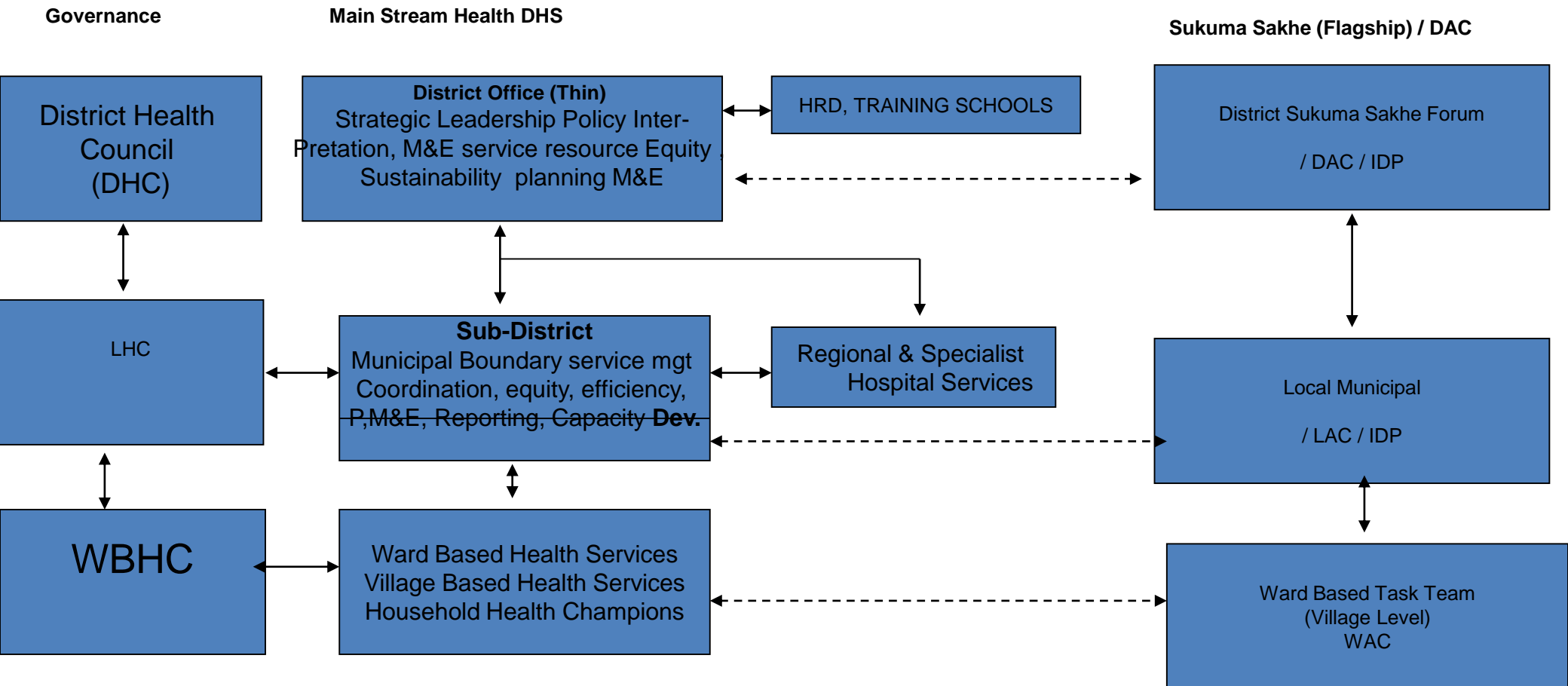


health

Department:  
Health

PROVINCE OF KWAZULU-NATAL

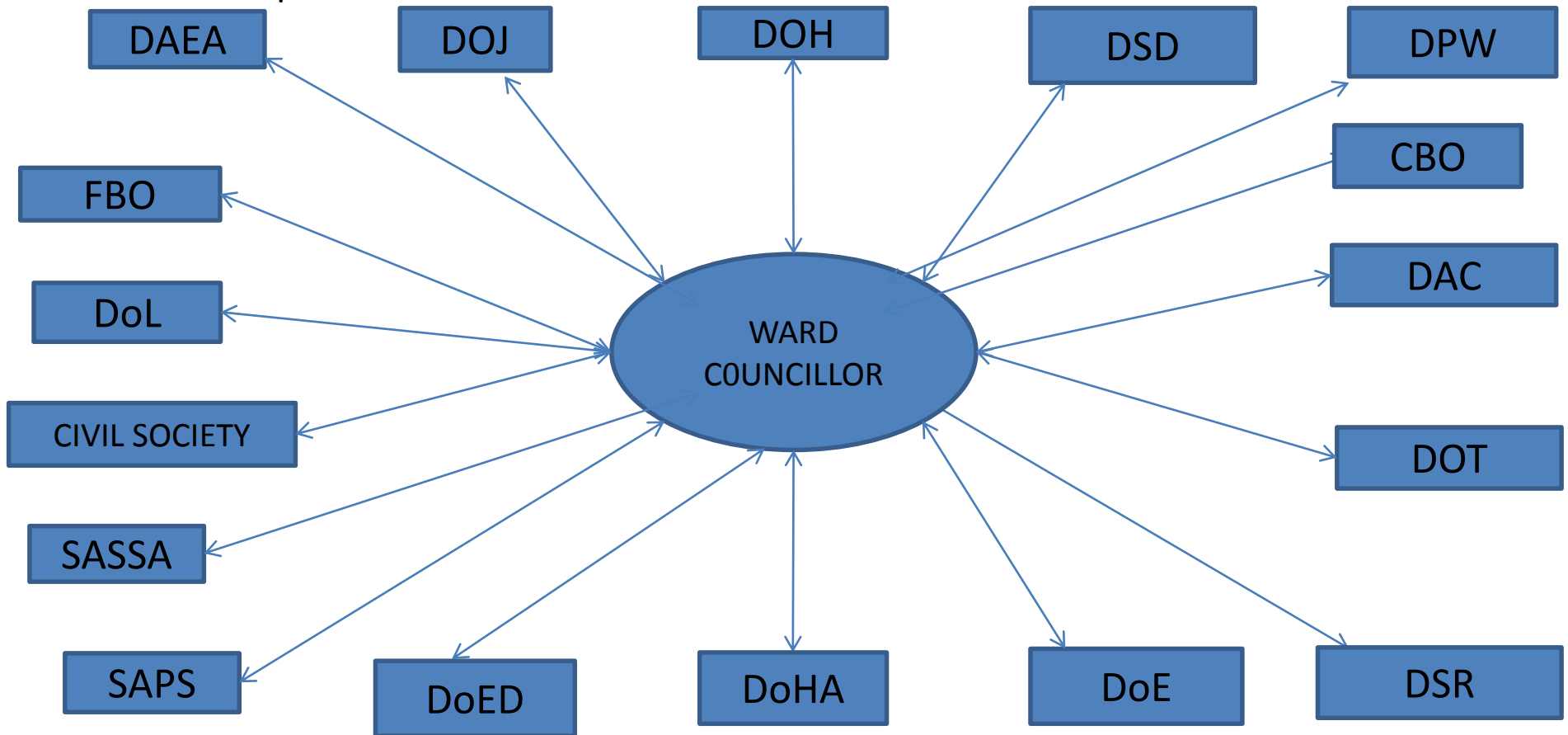
# KZN Proposed DHS (PHC Services) Framework (2011-14 Vision)



health

Department:  
Health  
PROVINCE OF KWAZULU-NATAL

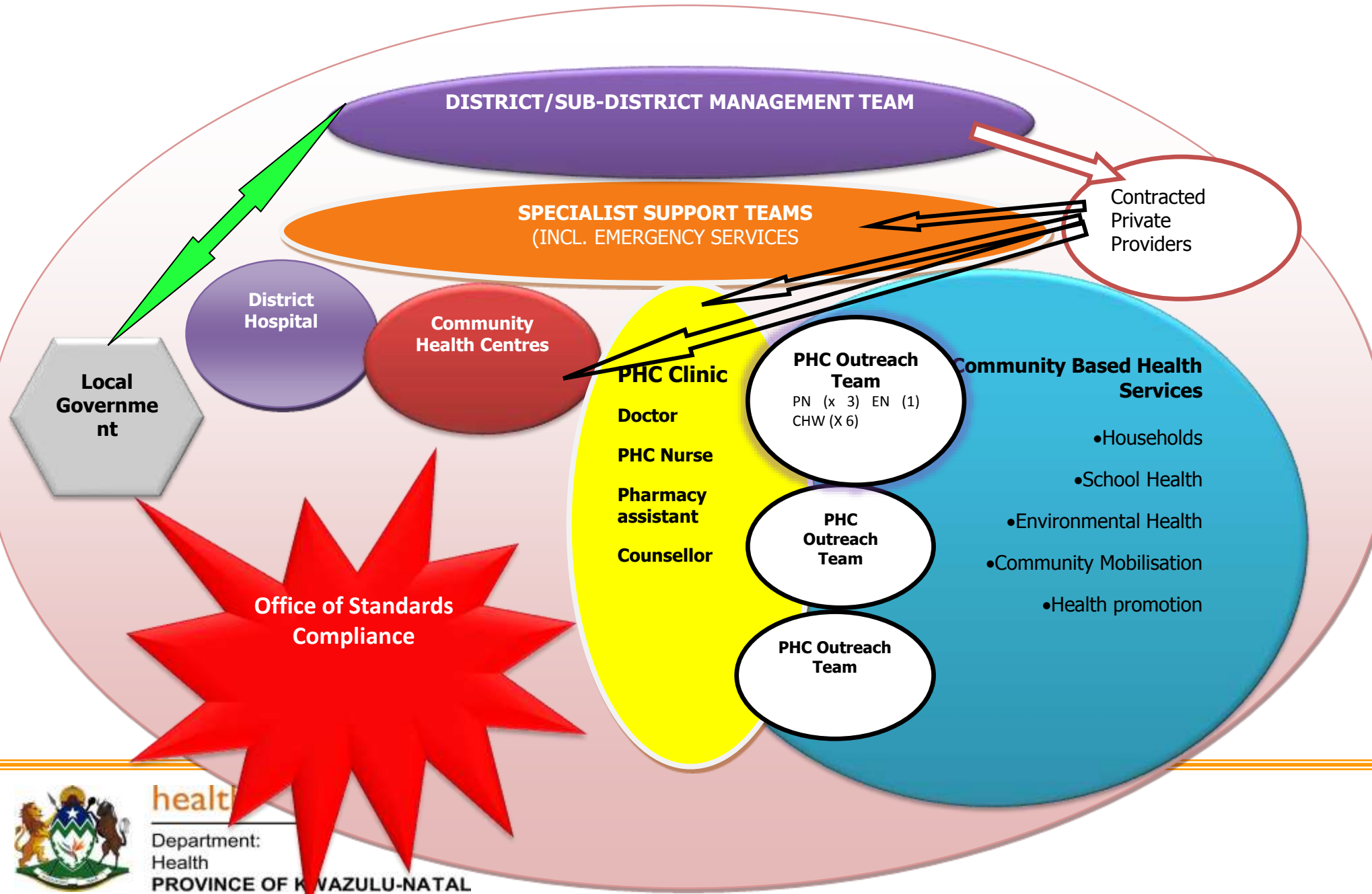
# WAR ROOM PARTICIPANTS



health

Department:  
Health  
PROVINCE OF KWAZULU-NATAL

# DHS MODEL



health

Department:  
Health  
PROVINCE OF KWAZULU-NATAL

# PHC REENGINEERING

- 4 Streams
  - District Specialist Teams
  - Ward Based PHC Outreach Teams
  - School health services
  - GP Contracting



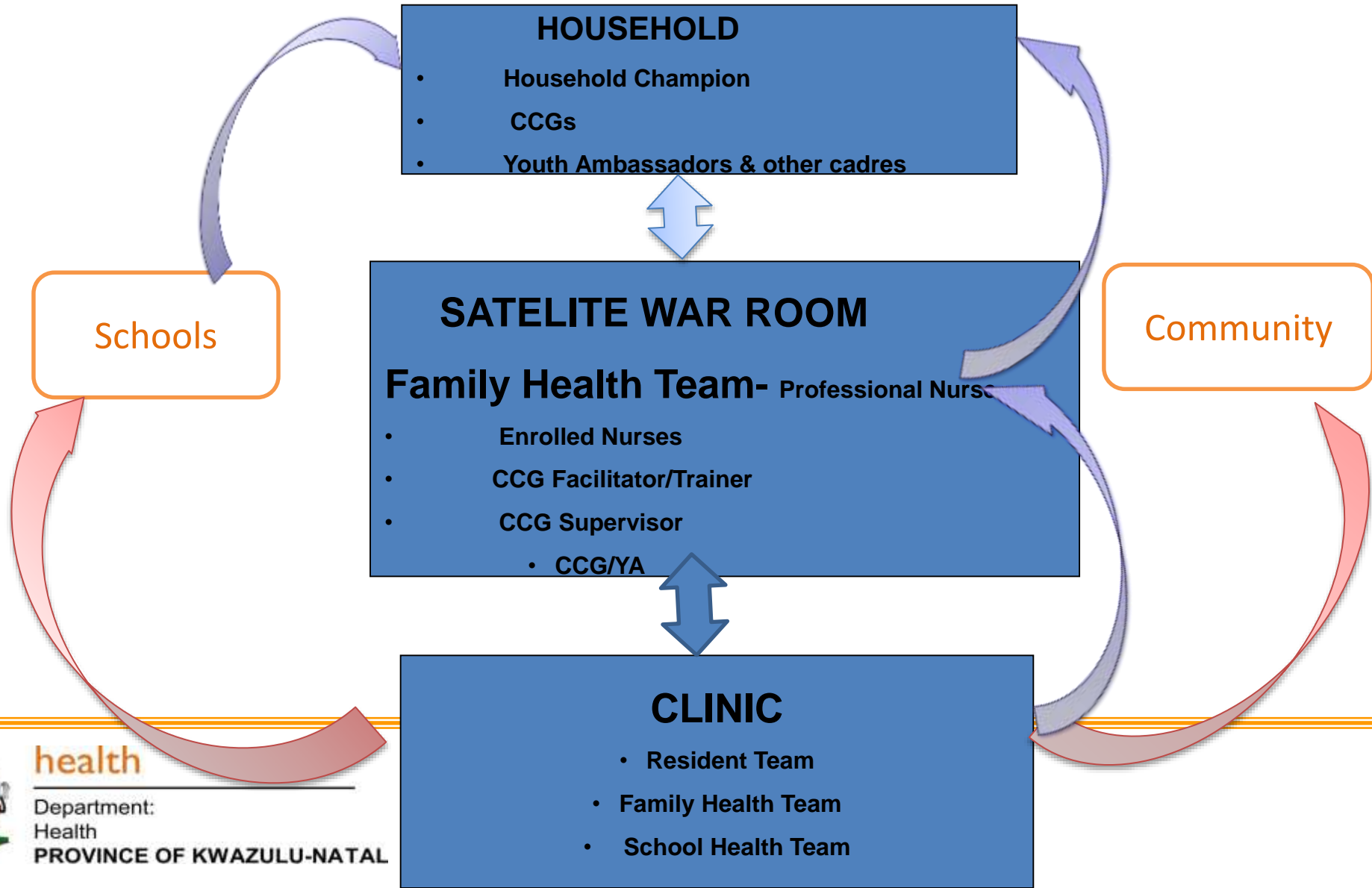
health

Department:  
Health

PROVINCE OF KWAZULU-NATAL

# Service Delivery Sites, Teams & Flow (Linkages)

## WARD BASED



health

Department:  
Health

PROVINCE OF KWAZULU-NATAL

# DISTRICT CLINICAL SPECIALIST TEAM

District	Advanced Midwife	Anaesthetist	Family Physician	Obstetrician	Paediatric Nurse	Pediatrician	PHC Nurse	Total
Amajuba	1	0	1	0	0	0	1	3
eThekweni	1	1 (not on the post )	0	1	1	1	1	6
iLembe	1	0	1	0	1	1 (work only 5 hours per day)	1	5
Harry Gwala	1	0	1	1 (support)	1	1	1	5
UGu	1	0	1	0	1	0	1	4
uMgungundlovu	1	0	1	0	1	0	1	4
Umkhanyakude	1	0	1 (Acting)	0	1	0	1	4
UMzinyathi	1	0	0	0	1	0	1	3
UThukela	1	0	0	1	1	0	1	4
Uthungulu	1	0	1	1	1	0	1	5
Zululand	1	0	0	0	1	0	1	3
<b>Total</b>	11	1 not on post	6	4	10	3	11	45



# FAMILY HEALTH TEAMS (WBOT)

- Currently 134 family health teams
- Each team made up of 1PN; EN; CCGs
- Target 1 team/clinic (2017) special focus on 169 most deprived wards& 1 team / ward per (2019)
- All teams to have Health Promotor Assistants -**UKZN**
- Only one district has really struggled with the establishment of teams –resorted to the new option of an EN led team and has come up with 14 teams



health

Department:  
Health

PROVINCE OF KWAZULU-NATAL

# CCG District allocation

District	Number of CCGs
Umgungundlovu	812
Sisonke	848
UThukela	736
Umzinyathi	472
Amajuba	400
EThekwini	1882
Ugu	900
Ilembe	812
Umkhanyakude	802
Zululand	753
UThungulu	808

# FAMILY HEALTH TEAM CHALLENGES

- Recruitment & retention –not familiar with the demands
- Inadequate community entry skills and experience
- No funding for teams except in NHI districts

## Next step

- Deployment of experienced staff in less busy hospital and clinics
- Close cooperation with KZN Nursing Directorate & Academic institutions to influence placement of student nurses in districts during training



health

Department:  
Health

PROVINCE OF KWAZULU-NATAL

# CCG achievements & Challenges

## Career Pathing -Learnership:

DOH - Enrolled Nursing

- Nutrition advisor

- Health Promoter Assistants (2015 UKZN)

DSD - Social Auxiliary Work

- Child and Youth Care Work

- **Challenges** –Quite overloaded
- Some gaps in coverage



health

Department:  
Health

PROVINCE OF KWAZULU-NATAL

# CURRENT INTEGRATED SCHOOL HEALTH SERVICES & VEHICLES

DISTRICTS	No. of teams per district	No. of PN's	No. EN's	No. ENA's	Dedicated vehicles
Ugu	16	16	13	8	6
Umgungundlovu	23	23	21	4	23
Uthukela	15	15	13	0	7
Umzinyathi	17	17	19	0	14
Amajuba	9	9	12	1	3
Zululand	14	14	16	2	6
Umkhanyakude	10	10	10	1	7
Uthungulu	19	19	19	0	07
Ilembe	10	10	13	0	8
EThekwini	45	45	33	10	17
Harry Gwala	17	17	20	8	9
<b>TOTAL</b>	<b>186</b>	<b>186</b>	<b>189</b>	<b>34</b>	<b>101</b>



health

Department:  
Health  
PROVINCE OF KWAZULU-NATAL

# DEMOGRAPHICS

## Number of schools

- Primary = 3752
- Combined = 562
- Secondary = 1503
- Special schools = 74
- **A total of 5891 schools VS 186 TEAMS**



health

Department:  
Health  
PROVINCE OF KWAZULU-NATAL

# DEMOGRAPHICS

- **NUMBER OF QUINTILE 1 and 2 IN KZN**
- Quintile 1 = 1911
- Quintile 2 = 1842
- **A total of 3753**



health

Department:  
Health  
PROVINCE OF KWAZULU-NATAL

# Next Steps

- Planning to recruit more teams to cover the 169 wards - Bidding for funding
- Exploring deployment of staff from less busy institutions
- Re- allocation of vehicles to these teams
- Strengthen links amongst all Outreach teams, mobiles and residential clinics
- Strengthen referral system to Universal Mobile Units (Oral, Eye Care, TB buses) positioned at strategic points per region



health

Department:  
Health

PROVINCE OF KWAZULU-NATAL



# GOVERNANCE STRUCTURES

- CLINIC COMMITTEES APPOINTED BY MEC
- HOSPITAL BOARDS
- DISTRICT HEALTH COUNCIL
- NEED TO FACILITATE THE LINK BETWEEN THESE COMMITTEES WITH WARD COMMITTEES



health

Department:  
Health  
PROVINCE OF KWAZULU-NATAL

# FROM JERUSALEM TO PHOLELA

- Service delivery team – reviving Karks’ activities;  
Brazilian & Cuban approach referral system;  
Grading of clients
- Partnership with UKZN; UWC & KZN COLLEGE-  
UKZN first students



health

Department:  
Health  
PROVINCE OF KWAZULU-NATAL